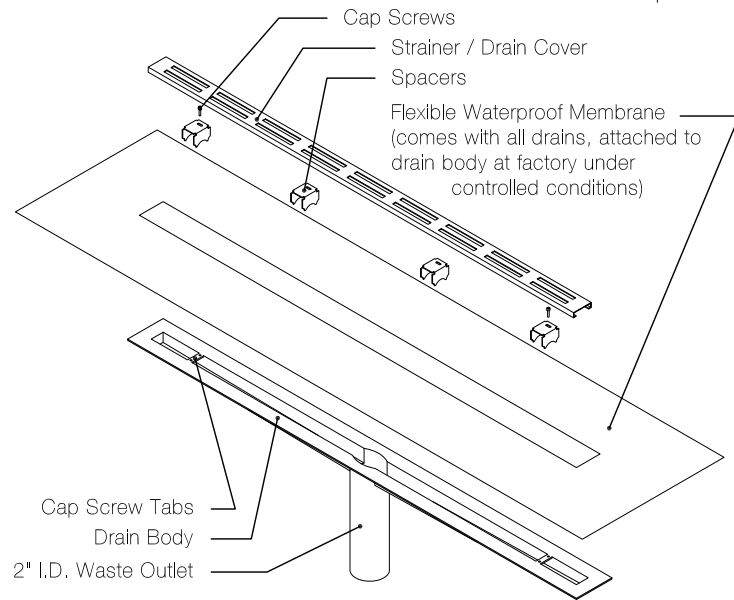


Custom Fabricated Commercial (Long) Waste Outlet ProLine Drain Body

Features

- 18 Gauge 316L Stainless Steel.
- Waste outlet can be any length from 2" to 14" below trough.
- Drain body can be any size from 10" to 100".
- Integral waterproofing is factory attached 6" around the entire perimeter of the trough.
- Internally pitched channel drain body. No water will be sitting in trough after each use.
- 34" maximum horizontal distance for pitched channel. (from edge of trough to center of waste outlet)
- 2" I.D. schedule 10 steel down spout waste outlet.
- Waste outlets can be placed at virtually any location.
- Height adjustable strainer for thickness of finish from .5" to 2.5".



Proline Drain Assembly

Installation notes

- Install product according to the Typical ProLine Drain Installation details.
- Drain body cannot be cut to size or modified.
- Strainer can be oversized up to 6" longer than trough.
- Strainer can be cut on site.
- When used at the entry to a curbless shower as a primary shower drain, the capacity of the drain is 5gpm and WAVES is the only recommended strainer pattern.
- QuickDrain recommends the strainer extend the entire length of shower pan. (wall to wall or wall to curb)

Ordering

- A signed QuickDrain shop drawing and purchase order are required to start fabrication on all custom drains.
- Spacer size and strainer style must be specified.

Codes/Standards

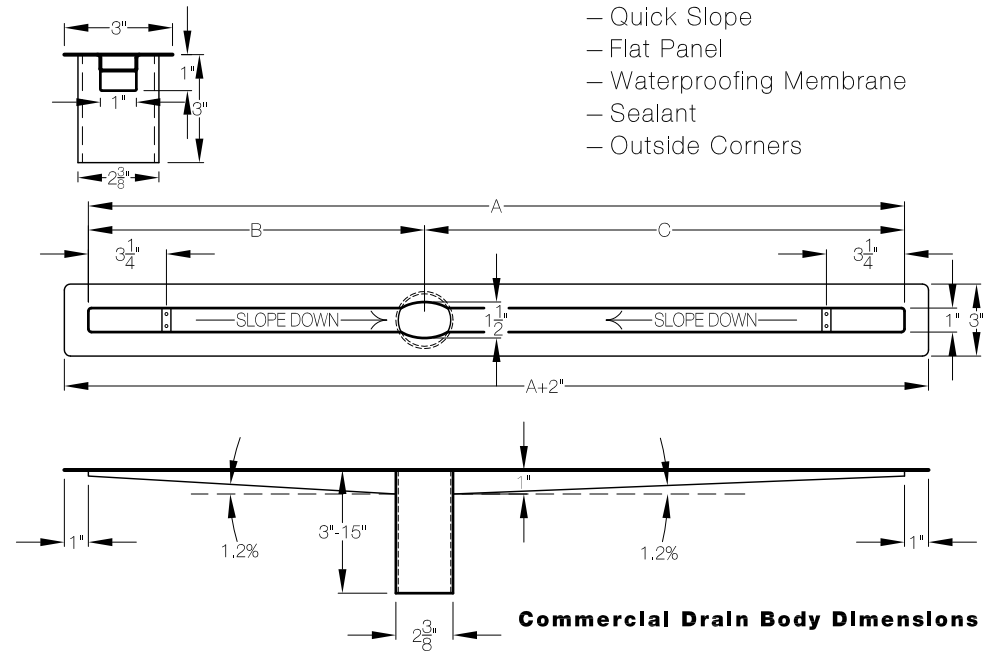
- 2006 IPC
- 2009 IPC
- 2007 IAPMO/UPC
- IGC 195-2009
- ASME A112.18.2-2005
- CSA B125.2-2005
- PMG 1042 Listing
- CUPC 6181 Listing

Required Parts

- Strainer
- Spacers

Recommended Parts

- Leveling Brackets or Placement Brackets
- Quick Slope
- Flat Panel
- Waterproofing Membrane
- Sealant
- Outside Corners

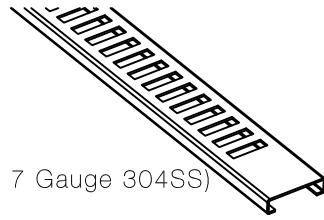


Commercial Drain Body Dimensions

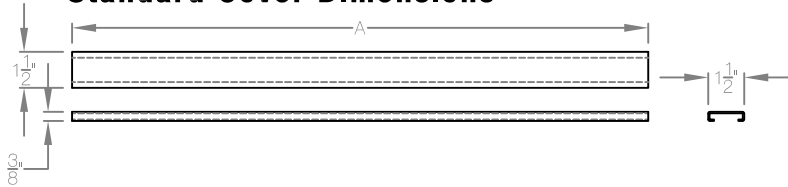
Covers

Features

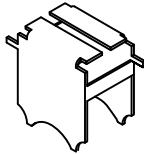
- 18 Gauge 304 Stainless Steel (Stream cover is 7 Gauge 304SS)
- Cover is removable
- Cover can be oversized up to 6" longer than drain trough
- Cover can be cut on site
- Available in five different patterns or TileIn (hidden drain)



Standard Cover Dimensions



Spacers

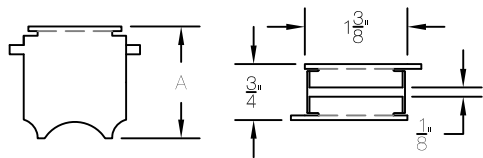


Description

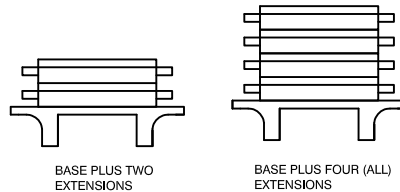
- Spacers are used to set the correct distance between the drain flange and the top of the drain cover. This is the same distance as from the waterproofing to top of the finished flooring material.
- Spacer size is equal to total floor finish thickness.
- Spacers are required with all PLD models.

- Plastic Spacer Set - up to $\frac{7}{8}$ "
- Metal Spacer - $\frac{7}{8}$ " up to $2 \frac{1}{2}$ "

Metal Spacer Detail



SP - Spacer Set up to $\frac{7}{8}$ " High



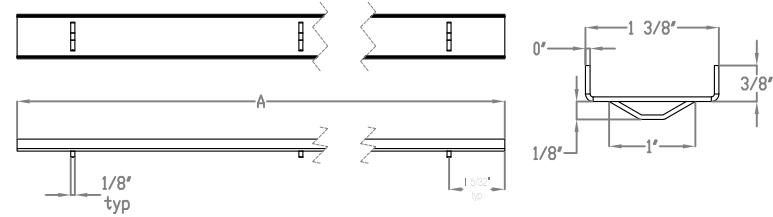
Note:

- QuickDrain recommends the cover extend the entire length of shower pan (wall to wall or wall to curb)
- It is not recommended to place the TileIn cover in any location where it can be stepped on or rolled over

PROLINE drain

by QUICKDRAIN USA

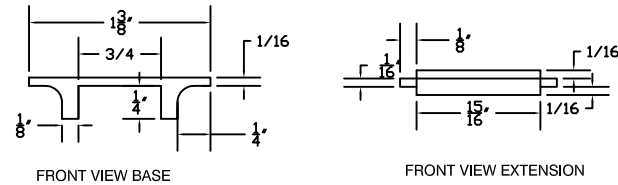
Tile-In Cover Dimensions



Standard Cover Patterns

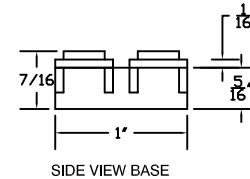
- COSMO
- HORIZONTAL
- LINES
- STREAM
- VERTICAL

Plastic Spacer Detail



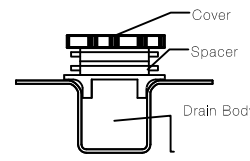
FRONT VIEW BASE

FRONT VIEW EXTENSION

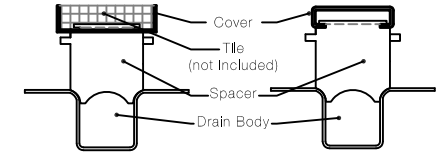


SIDE VIEW BASE

SIDE VIEW EXTENSION



Standard Cover Assembly (with plastic spacer)



Tile-In Cover Assembly (with metal spacer)

Standard Cover Assembly (with metal spacer)