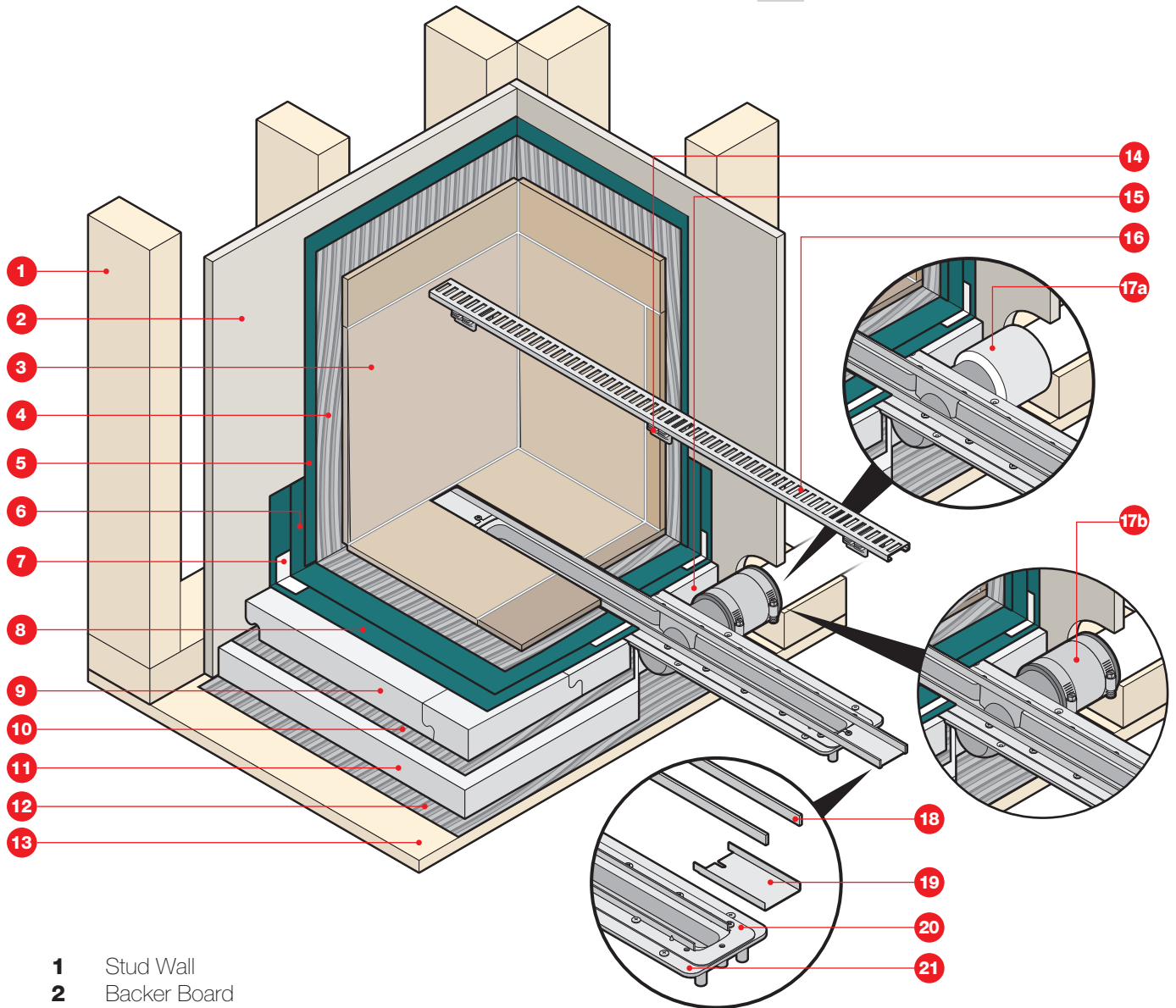


**Side (Horizontal) Waste Outlet
Drain Installation Using ShowerLine Pan
with Liquid Waterproofing**

SHOWERLINE drain

by **QUICKDRAIN USA**



- 1** Stud Wall
- 2** Backer Board
- 3** Wall tile and Grout
- 4** Thin-set (for wall tile)
- 5** Liquid Waterproofing
- 6** Second Layer of Shower Pan Liquid Waterproofing
- 7** Reinforcing Fabric
- 8** First Layer of Shower Pan Liquid Waterproofing
- 9** Pre-sloped Interlocking PET Foam Panels
- 10** Thin-set
- 11** Flat Foam Panel
- 12** Thin-set
- 13** Sub-floor

- 14** Height Adjustable Spacer
- 15** Pre-sloped Interlocking Drain Support Frame
- 16** Drain Cover
- 17a** PVC to PVC connection
- 17b** Shielded No-Hub Coupling
- 18** Cover Channel
- 19** Trough Extension
- 20** Clamping Collar
- 21** Drain Body