



STREAM32, STREAM40, STREAM48, STREAM56, STREAM64, STREAM72 TECHNICAL SPECIFICATION

Job Name _____	Item # _____
Location _____	
Engineer _____	Contractor _____
PO # _____	Tag _____
Representative _____	

DESCRIPTION

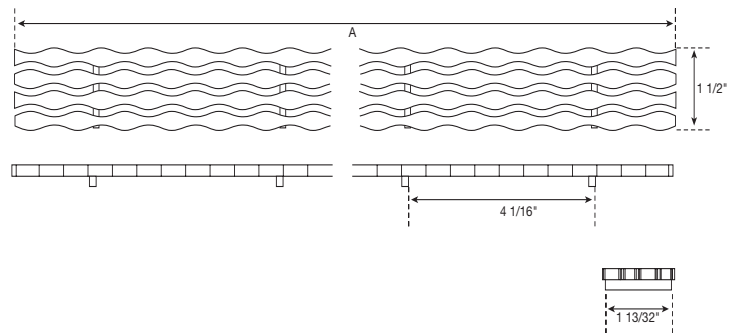
- Designed by MICHAEL GRAVES DESIGN™
- Removable
- Made of 304 stainless steel
- Brushed and polished stainless steel, available in six different standard lengths
- Spacers are required to hold the cover to the drain body
- Can be used with both ShowerLine and ProLine drains
- Can be cut on site to fit exact finished opening
- Height adjustable with use of spacers.
- Available in Brushed Stainless only

Note: Quickdrain recommends that cover needs to span the full width of the shower from vertical to vertical surface (wall to wall or wall to curb).

Do Not grout the cover (cover must remain removable for maintenance).

APPROVALS AND LISTINGS

Before installing QuickDrain USA system, check with your local building department/plumbing inspector to ensure compliance with the local building codes. QuickDrain USA LLC is not responsible for any conflicts with local building codes. QuickDrain USA LLC is not responsible for improper installation of any part of the assembly or the waterproofing membrane. Dimensions are subject to manufacturer's tolerance and can change without notice.



MODEL NUMBER	A	SHOWERLINE DRAIN*	PROLINE DRAIN*
STREAM32	32"	PVC2430D	PLD26, PLD27.5
STREAM40	40"	PVC3240D	PLD30, PLD33, PLD36
STREAM48	48"	PVC4048D	PLD40, PLD44, PLD46
STREAM56	56"	PVC4856D	PLD48, PLD52
STREAM64	64"	PVC5664D	PLD57
STREAM72	72"	PVC6472D	PLD63, PLD68

*Compatible drain body for cover.