



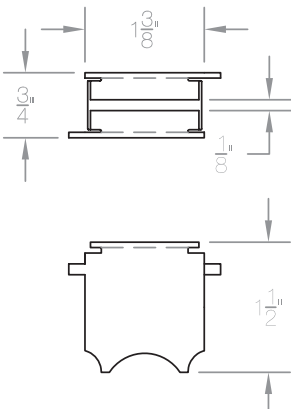
# SP1.5 – ONE AND ONE HALF INCH SPACER TECHNICAL SPECIFICATION

Job Name _____	Item # _____
Location _____	
Engineer _____	Contractor _____
PO # _____	Tag _____
Representative _____	

## DESCRIPTION

- Spacers are used to set the correct distance between the drain flange and the top of the drain cover. This same distance as from the waterproofing to top of the finished flooring material.
- 18 Gauge 304 Stainless Steel
- Total height of spacer and cover from top of drain flange is 1.5"
- Spacers are required.

## SPACER DETAIL



## DRAIN ASSEMBLY SECTION

