



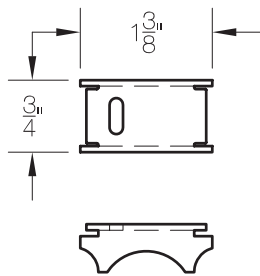
SP 1/2 HALF INCH SPACER TECHNICAL SPECIFICATION

Job Name _____	Item # _____
Location _____	
Engineer _____	Contractor _____
PO # _____	Tag _____
Representative _____	

DESCRIPTION

- Spacers are used to set the correct distance between the drain flange and the top of the drain strainer. This is the same distance as from the waterproofing to top of the finished flooring material.
- 18 Gauge 304 stainless steel.
- Total height of spacer and strainer from top of drain flange is 1/2"
- Spacers are required with all PLD models.

SPACER DETAIL



DRAIN ASSEMBLY SECTION

