



HORIZONTAL32, HORIZONTAL40, HORIZONTAL48, HORIZONTAL56, HORIZONTAL64, HORIZONTAL72 TECHNICAL SPECIFICATION

| | |
|----------------------|------------------|
| Job Name _____ | Item # _____ |
| Location _____ | |
| Engineer _____ | Contractor _____ |
| PO # _____ | Tag _____ |
| Representative _____ | |

DESCRIPTION

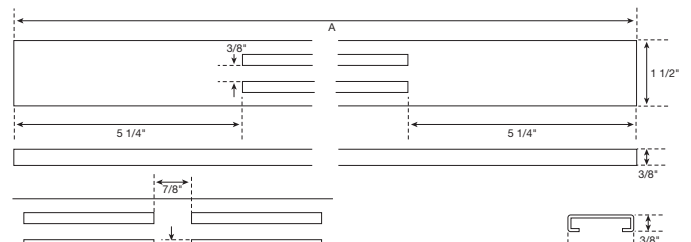
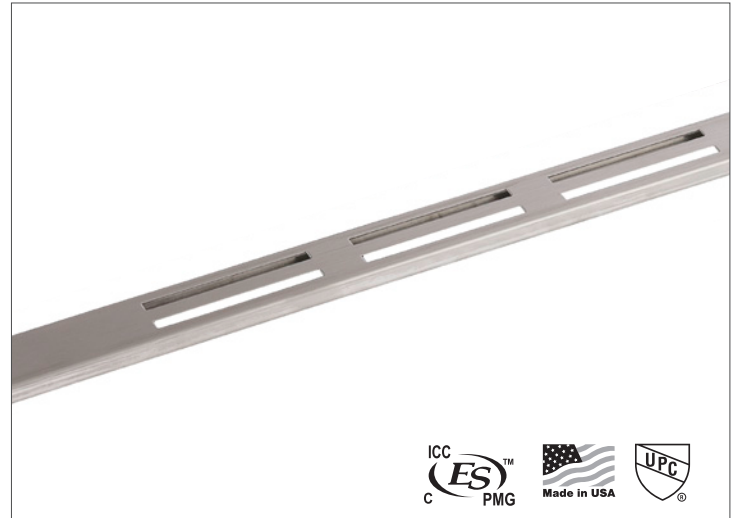
- Removable
- Made of 304 stainless steel
- Brushed and polished stainless steel, available in six different standard lengths
- Spacers are required to hold the cover to the drain body
- Can be used with both ShowerLine and ProLine drains
- Can be cut on site to fit exact finished opening
- Height adjustable with use of spacers.

Note: Quickdrain recommends that cover needs to span the full width of the shower from vertical to vertical surface (wall to wall or wall to curb).

Do Not grout the cover (cover must remain removable for maintenance).

APPROVALS AND LISTINGS

Before installing QuickDrain USA system, check with your local building department/plumbing inspector to ensure compliance with the local building codes. QuickDrain USA LLC is not responsible for any conflicts with local building codes. QuickDrain USA LLC is not responsible for improper installation of any part of the assembly or the waterproofing membrane. Dimensions are subject to manufacturer's tolerance and can change without notice.



| MODEL NUMBER | A | SHOWERLINE DRAIN* | PROLINE DRAIN* |
|--------------|-----|-------------------|---------------------|
| HORIZONTAL32 | 32" | PVC2430D | PLD26, PLD27.5 |
| HORIZONTAL40 | 40" | PVC3240D | PLD30, PLD33, PLD36 |
| HORIZONTAL48 | 48" | PVC4048D | PLD40, PLD44, PLD46 |
| HORIZONTAL56 | 56" | PVC4856D | PLD48, PLD52 |
| HORIZONTAL64 | 64" | PVC5664D | PLD57 |
| HORIZONTAL72 | 72" | PVC6472 | PLD63, PLD68 |

*Compatible drain body for cover.