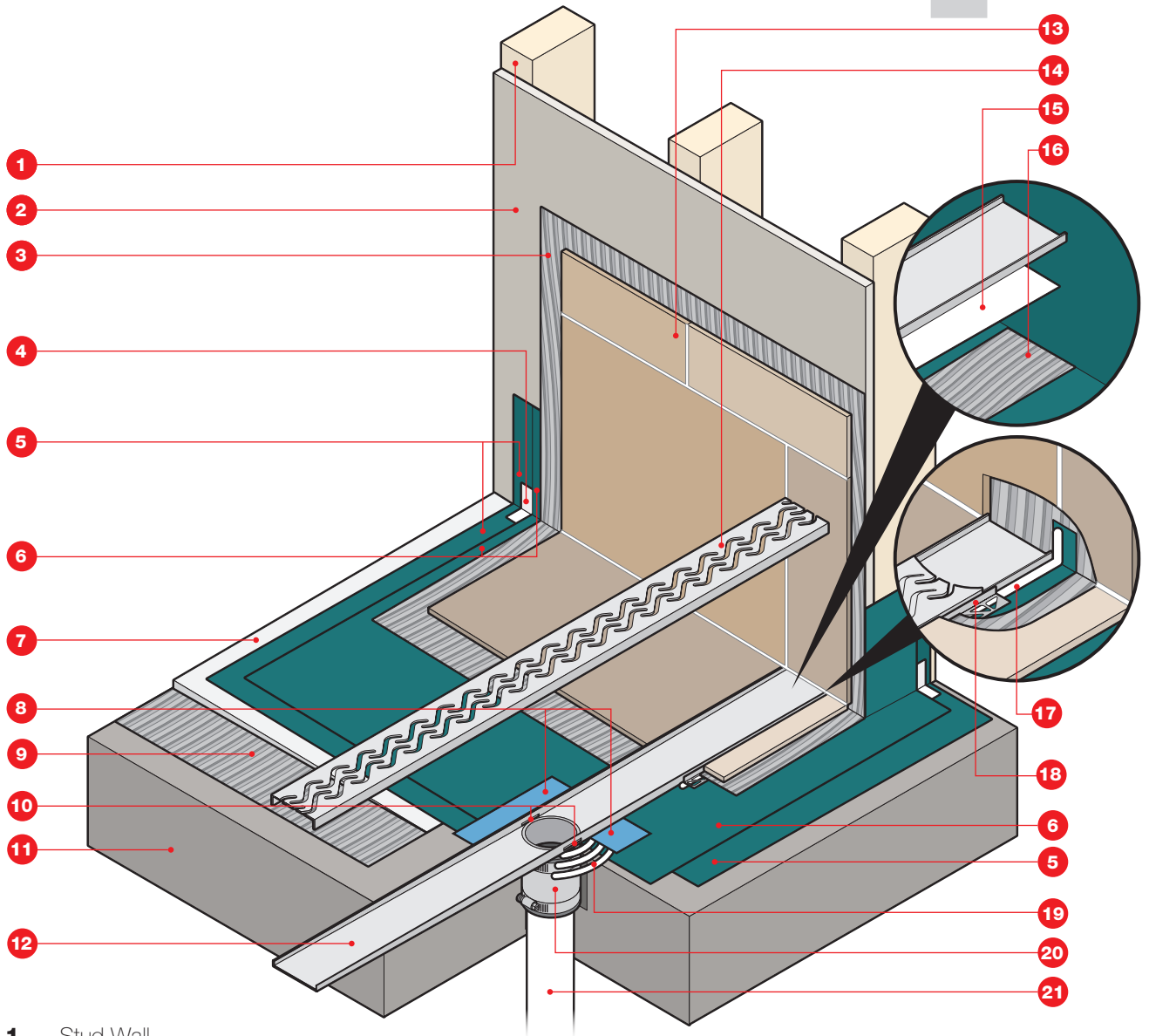


# RETROFIT drain (Curbless Entry)



- |  |   |
|--|---|
| <ul style="list-style-type: none"> <li><b>1</b> Stud Wall</li> <li><b>2</b> Backer Board</li> <li><b>3</b> Thin Set (for wall tile)</li> <li><b>4</b> Reinforcing Fabric</li> <li><b>5</b> First layer of Liquid Waterproofing</li> <li><b>6</b> Second layer of Liquid Waterproofing</li> <li><b>7</b> Slope</li> <li><b>8</b> Pipe Collar</li> <li><b>9</b> Thin Set</li> <li><b>10</b> Weep Holes</li> <li><b>11</b> Concrete Subfloor</li> <li><b>12</b> Drain Body</li> </ul> | <ul style="list-style-type: none"> <li><b>13</b> Wall Tile and Grout</li> <li><b>14</b> Drain Cover</li> <li><b>15</b> Transition Tape (under drain body)</li> <li><b>16</b> Thin Set (under drain body)</li> <li><b>17</b> Sealant</li> <li><b>18</b> Tile Edging — Capillary Break</li> <li><b>19</b> Modified Urethane Sealant</li> <li><b>20</b> No-Hub Coupling</li> <li><b>21</b> Pipe Extension</li> </ul> |
|--|---|

RETROD60  
NOV 2015



Office : 970.668.0805 or 866.998.6685 | Fax: 866.357.8502 | P.O. Box 1358 | Frisco, Colorado 80443

[quickdrainusa.com](http://quickdrainusa.com)

Before installing QuickDrain USA system, check with your local building department/plumbing inspector to ensure compliance with the local building codes. QuickDrain USA LLC is not responsible for any conflicts with local building codes. QuickDrain USA LLC is not responsible for improper installation of any part of the assembly or the waterproofing membrane. Dimensions are subject to manufacturer's tolerance and can change without notice.