

# Accessible at Back Wall Recessed into Sub-Floor



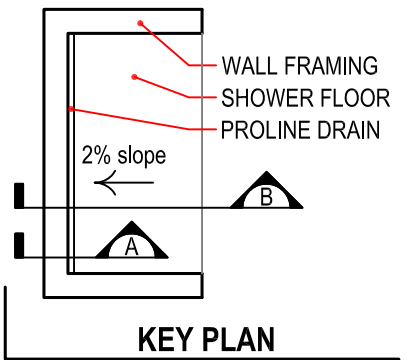
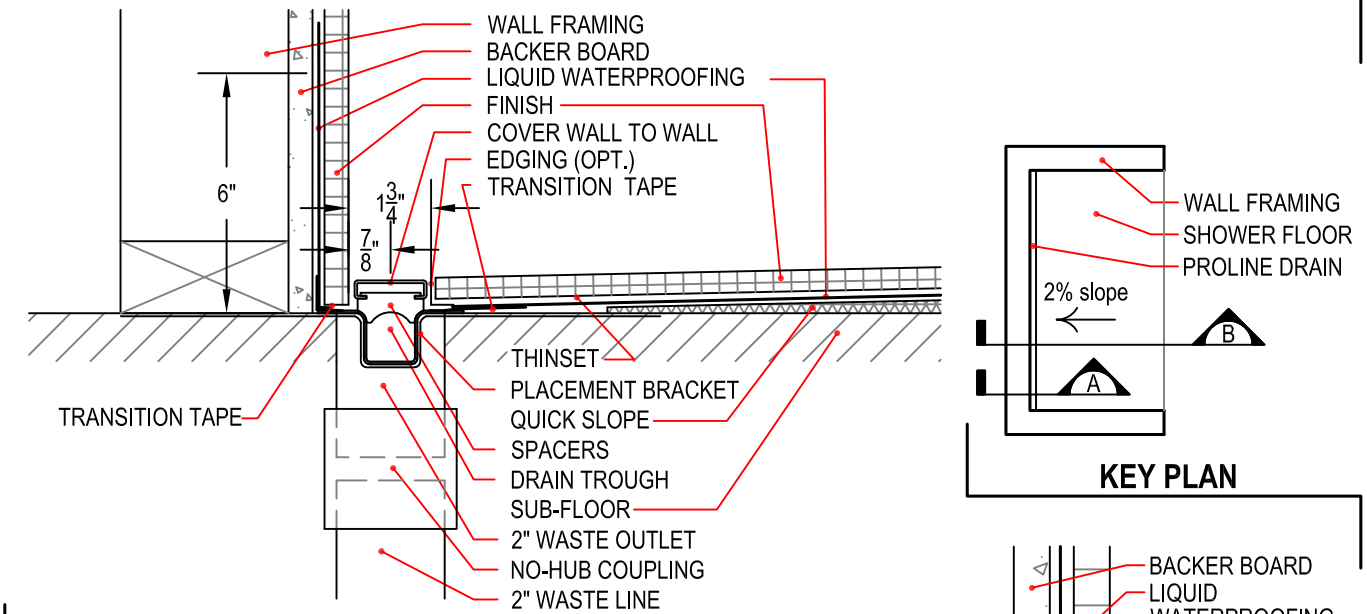
## Typical ProLine Drain Installation Details

Note: Set Quick Slope on structurally sound, flat sub-floor with fast-setting, self-curing thinset.

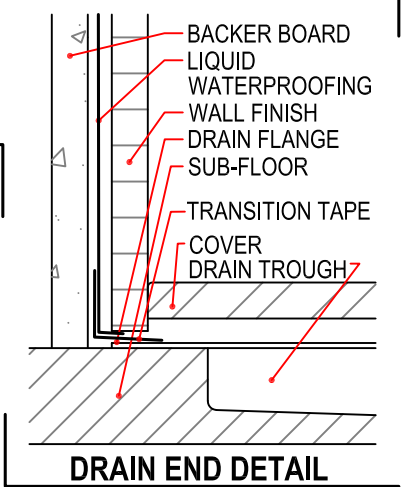
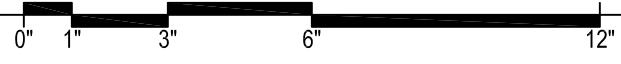
Set the drain body level. Do not follow sub-floor if it is out of level.

Do not grout in cover. Cover must remain removable for maintenance.

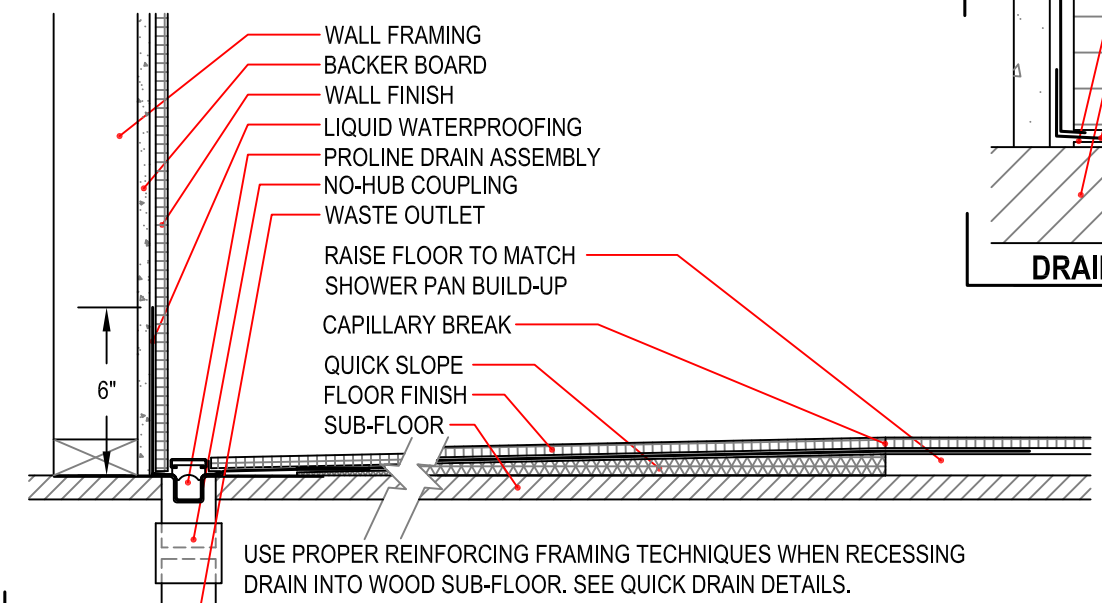
Use proper reinforcing framing techniques when recessing drain into wood sub-floor. See Quick Drain details.



**PROLINE DRAIN SET AT WALL**



**DRAIN END DETAIL**



**PROLINE DRAIN SET AT BACK WALL IN CURBLESS SHOWER**

