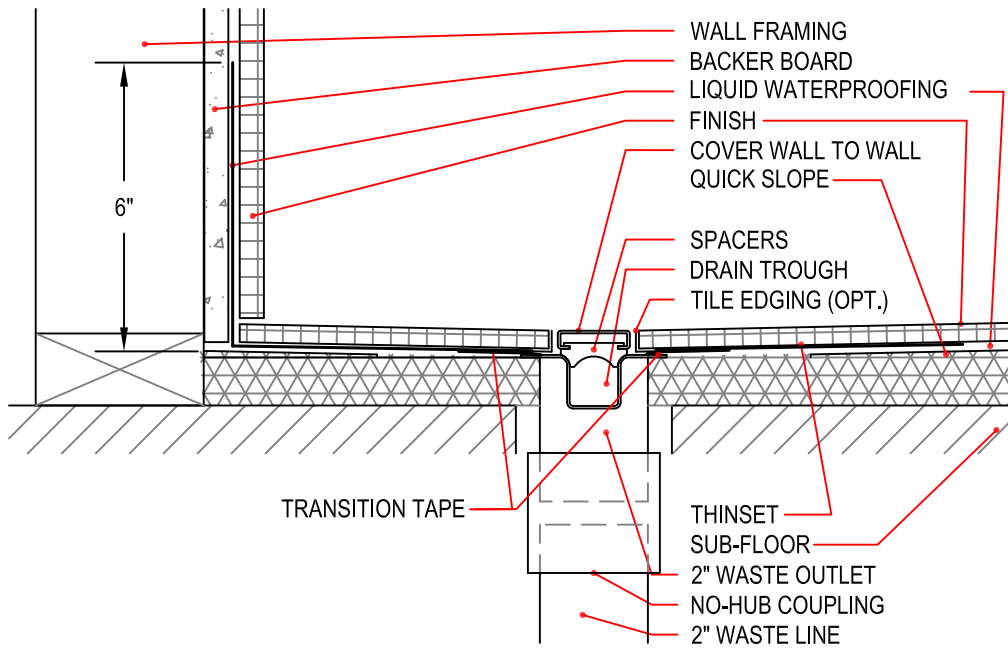


Above Floor Away from Wall

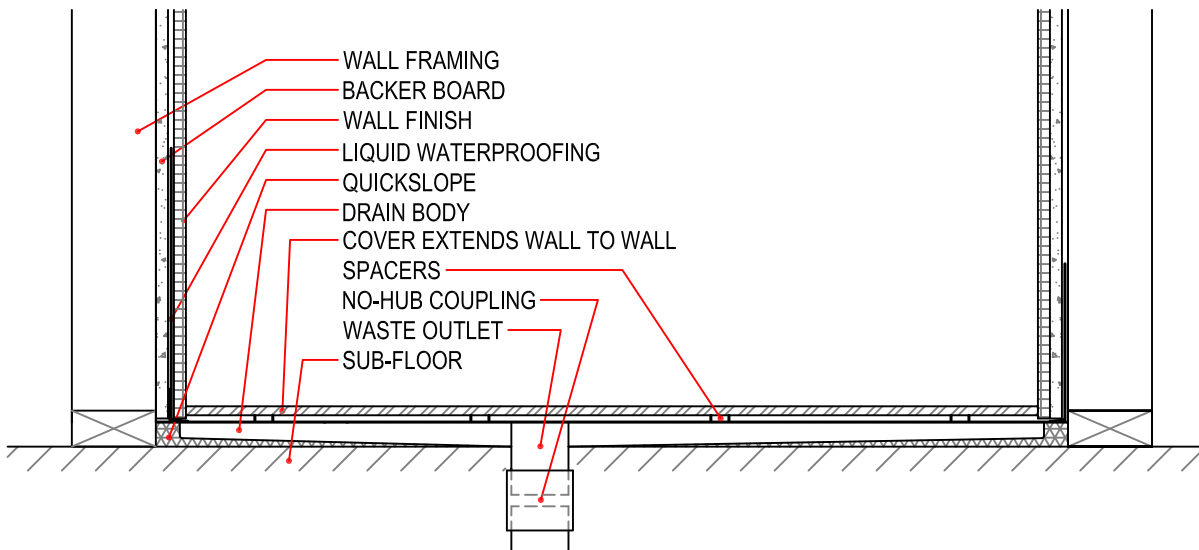
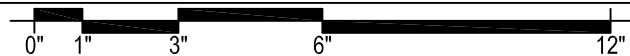
Typical ProLine Drain Installation Details

Note: Set all Quick Slope on structurally sound, flat sub-floor with fast-setting, self-curing thinset.
Set the drain body level. Do not follow sub-floor if it is out of level.

5 g.p.m. is the maximum recommended water flow for a drain installed at the entry to a curbless shower.



DRAIN SET ABOVE FLOOR AWAY FROM WALL



DRAIN SET ABOVE FLOOR AWAY FROM WALL - SECTION

