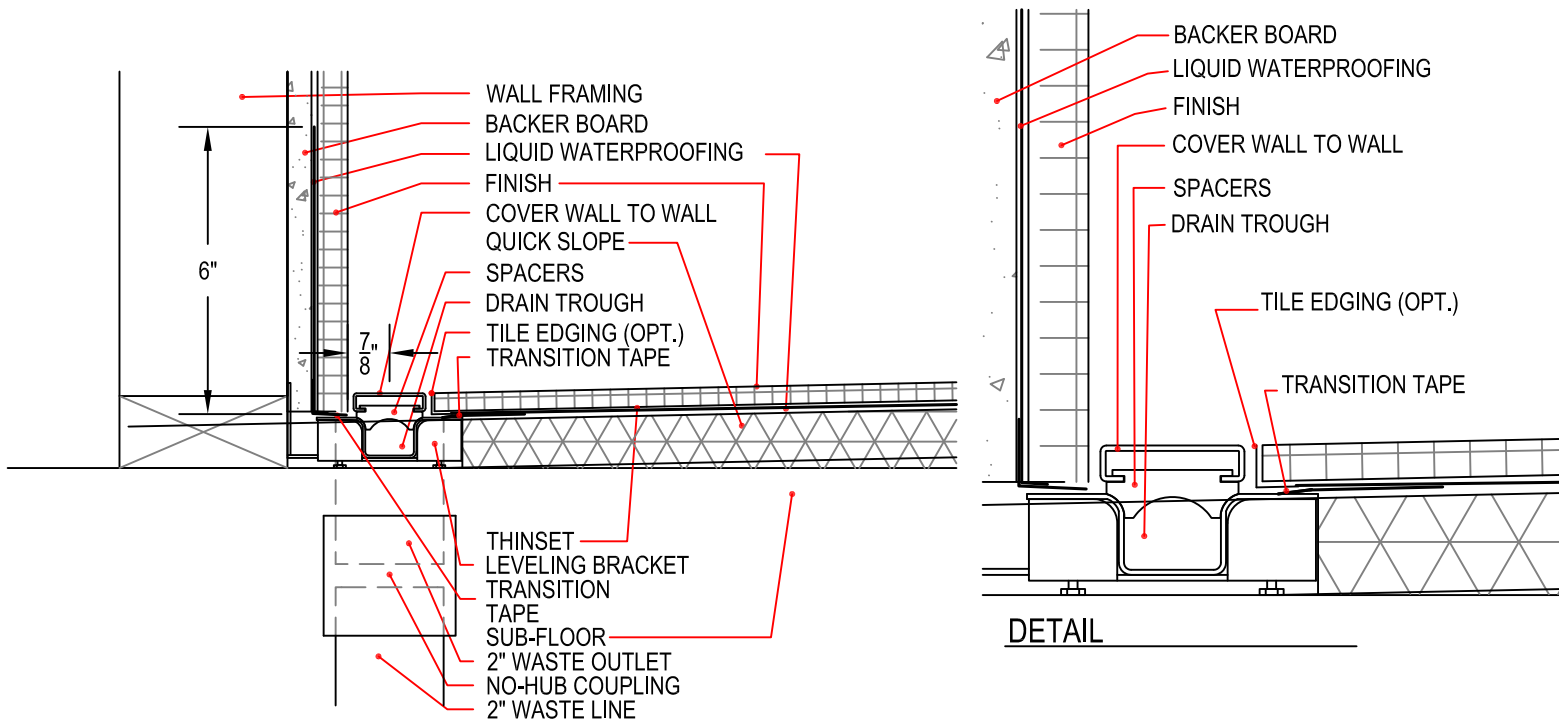


## Typical ProLine Drain Installation Details

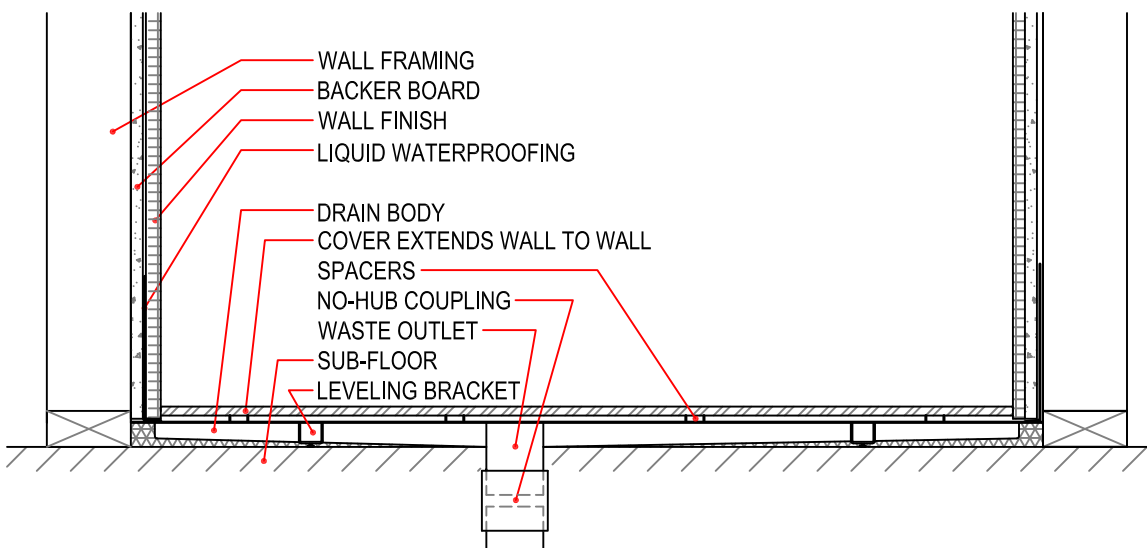
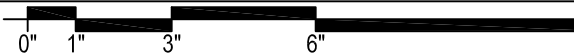
Note: Set all Quick Slope on structurally sound, flat sub-floor with fast-setting, self-curing thinset.

Set the drain body level. Do not follow sub-floor if it is out of level.

5 g.p.m. is the maximum recommended water flow for a drain installed at the entry to a curbless shower.



PROLINE DRAIN SET AT WALL ABOVE FLOOR



PROLINE DRAIN SET ABOVE FLOOR - SECTION

