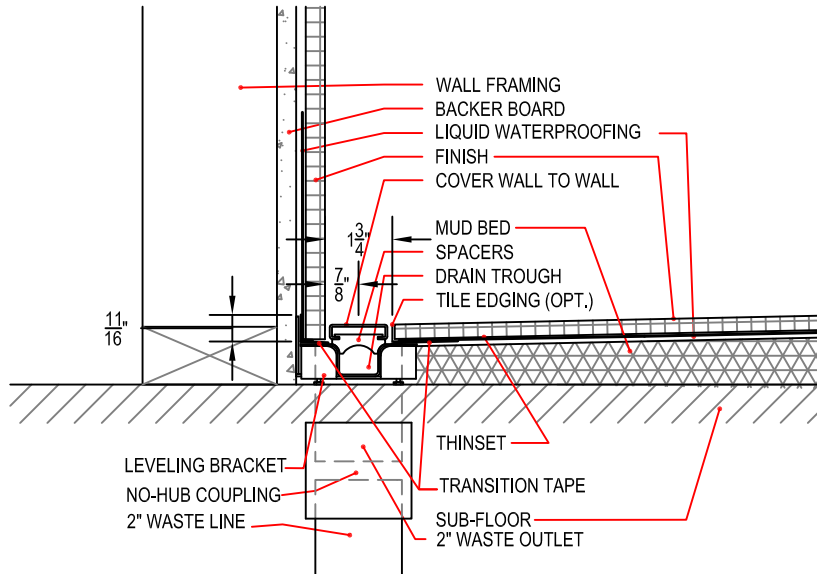


# Above Floor at Side Wall with Mortar Bed

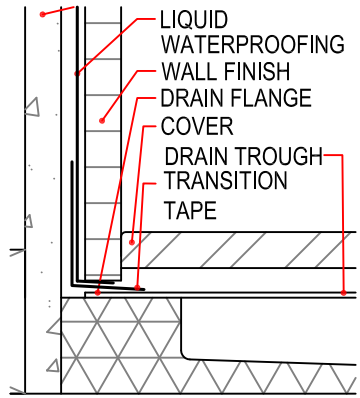
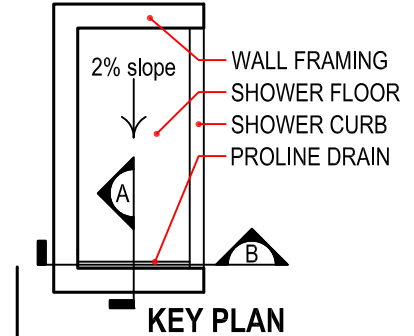
## Typical ProLine Drain Installation Details

Note: Set all Quick Slope on structurally sound, flat sub-floor with fast-setting, self-curing thinset.  
Set the drain body level. Do not follow sub-floor if it is out of level.  
Do not grout in cover. Cover must remain removable for maintenance.

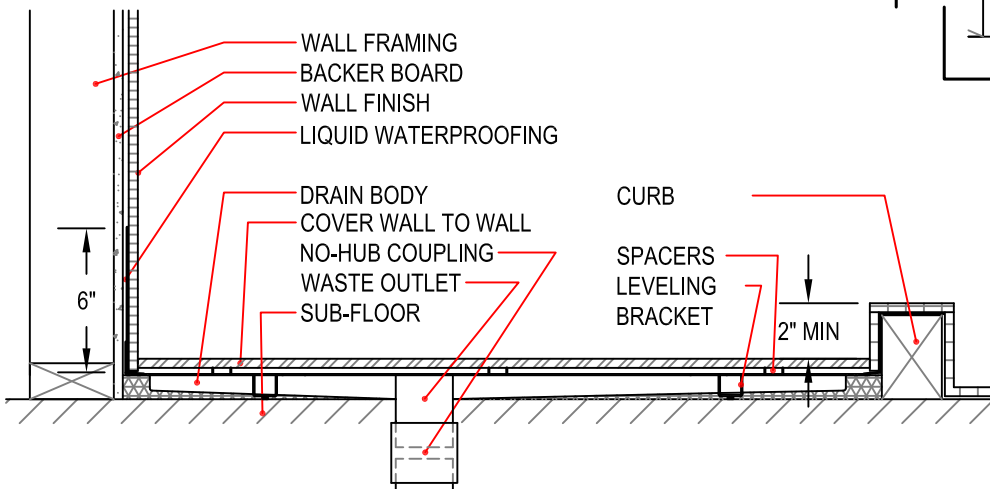


**A** PROLINE DRAIN SET AT WALL ABOVE SUB-FLOOR

0" 1" 3" 6" 12"



**DRAIN END DETAIL**



**B** DRAIN SET ABOVE SUB-FLOOR

